



HILLSIDE  
CHRISTIAN COLLEGE

# Fees and Charges 2021

*To knowledge, add wisdom*

[www.hillside.wa.edu.au](http://www.hillside.wa.edu.au)



## TABLE OF CONTENTS

FEES AND CHARGES SCHEDULE .....	2
ENROLMENT APPLICATION FEE: \$100.00 .....	2
FAMILY EDUCATION BOND: \$500.00 .....	2
PART A - TUITION FEES 2021 .....	3
KINDERGARTEN TO YEAR 12 ANNUAL TUITION FEES PER CHILD .....	3
PART B - LEVIES 2021 .....	3
EARLY LEARNING & PRIMARY LEVIES Per Child - Kindergarten to Year 6 .....	3
SECONDARY SCHOOL LEVIES Per Child - Years 7-12 .....	3
SECONDARY SCHOOL LEVIES Additional - Years 7-12 .....	3
PRIMARY FEES AND LEVIES NOTES (KINDERGARTEN – YEAR 6) .....	4
1:1 DEVICE HIRE – YEARS 4-6 .....	4
SYDNEY/ CANBERRA TRIP .....	4
SECONDARY FEES AND LEVIES NOTES (YEARS 7 – 12) .....	5
SYDNEY/ CANBERRA TRIP .....	5
1:1 DEVICE HIRE – HIGH SCHOOL .....	6
YEAR 7-10 BOOKLIST .....	6
YEAR 11-12 BOOKLIST .....	6
PART C – PAYMENT SCHEDULE 2021 .....	7
FEES AND CHARGES PAYMENTS .....	7
ADDITIONAL FEES AND CHARGES INFORMATION .....	7
NOTICE OF WITHDRAWAL .....	8
HOW TO PAY SCHOOL FEES .....	9
VOLUNTARY DONATIONS .....	9
COLLEGE BUILDING FUND (Tax Deductible - voluntary) .....	9
COLLEGE SCHOLARSHIP FUND (Tax Deductible - voluntary) .....	9
SCHOOL DATES 2021 .....	9



## FEES AND CHARGES SCHEDULE

HillSide Christian College is a private school. The information in this schedule should be used by parents/carers to calculate total fees and charges for 2021.

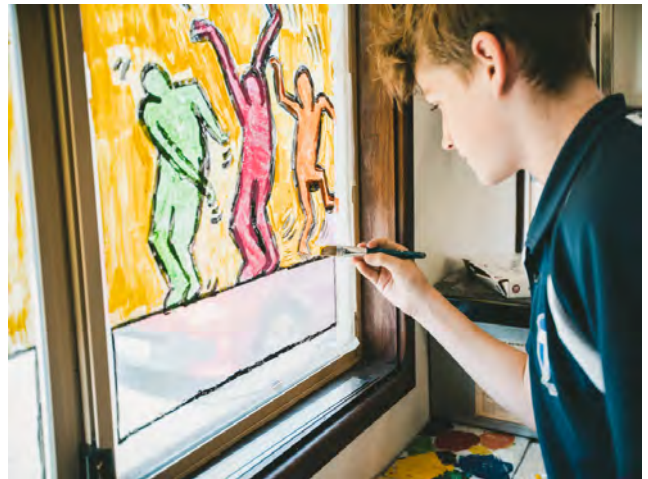
The total fees and charges consist of adding Tuition Fees (Part A) and Levies (Part B). The Payment Schedule is outlined in Part C. Please be aware of the exit notice requirements and additional booklist for High School students.

The main components in relation to fees and charges are listed below:

- Enrolment Application Fee
- Education Bond
- Part A - Tuition Fees
- Part B - Levies (please use applicable Primary and/or Secondary table)
- Part C - Payment Schedule 2021
- High School students have book list fees which are additional. Primary School students do not have a Booklist.
- Exit Notices - Cut-off dates 2021

### ENROLMENT APPLICATION FEE: \$100.00

Parents seeking to enrol their child/ren at HillSide Christian College need to make an application, and attend an interview as part of the enrolment procedure. A non-refundable enrolment application fee of \$100 is payable when enrolment application forms are submitted.



### FAMILY EDUCATION BOND: \$500.00

A Family Education Bond is charged for entry into any year level of the College by new families. It is refundable when the last student in a family leaves the College if there are no outstanding fees. Please note: a student entering Kindergarten or Pre-Primary must transition into the primary section (Year 1) to be eligible for the refund of the Bond.

In summary, the Bond is **not refundable** if:

- Any student who leaves the College before starting Year One (having entered in Kindergarten or Pre-Primary years);
- A family (student/s), pre-accepted for entry to the College, declines the position, and does not fill the enrolment;
- A family leaves the College with outstanding fees.



## » PART A - TUITION FEES 2021

### KINDERGARTEN TO YEAR 12 ANNUAL TUITION FEES PER CHILD

Year Level	First Child	Second Child	Third Child	Fourth Child +
Kindergarten	2,500	No discount applies		
Pre-Primary-Year 6 (Primary)	3,500	2,800	2,100	Levies only
Years 7 - 12 (Secondary)	4,200	3,400	2,500	Levies only

*Please note: Families with four or more children from Pre-Primary to Year 12 do not pay tuition fees for the fourth and subsequent children. However, Kindergarten children do not attract a discount. Levies are applied to all students in all years at the College, and there is no discount for levies.*

## » PART B - LEVIES 2021

Annual Levies are charged per student, and need to be added to Tuition Fees (PART A)

### EARLY LEARNING & PRIMARY LEVIES Per Child - Kindergarten to Year 6

Year	Levies	Device Hire	Levy Total
4K	700		700
PP	800		800
1	800		800
2	800		800
3	800		800
4	800	300	1100
5	800	300	1100
6	900	300	1200

### SECONDARY SCHOOL LEVIES Per Child - Year 7-12

Year	Levies	Text/e-books core subjects	Device Hire	Levy Total
7	1150	240	300	1690
8	880	240	*	1120
9	1050	240	*	1290
10	800	240	600	1640
11	800	See booklist	*	800
12	800	See booklist	*	800

\*Current students see ICT Notes



### SECONDARY SCHOOL LEVIES Additional - Year 7-12

VET charge - Business	200
VET charge - Tourism/Hospitality	300
VET charges - other courses	200
WACE charge - Outdoor Education	300
Years 7-10 non-core subject booklist including subject charges	See booklist

See booklist for more details on these charges.



## » PRIMARY FEES AND LEVIES NOTES (Kindergarten – Year 6)

Early Learning and Primary Levies include general amenities, resources, compulsory swimming lessons, ICT levy, Device Hire (Year 4-6) booklist and other consumable items.

1. All fees and levies are compulsory.
2. **General Amenities** fee includes charges for copying, student insurance, bus use, Year Book, Christian Living programme, and other consumable items.
3. The **Resources** item allows teachers to conduct *some* excursions/incursions, specific classroom activities and school projects without costing parents any extra.
4. Year 6 **Resources** fee includes graduation dinner, leavers' shirt, and associated excursion.
5. The **Building Fund** is a voluntary tax-deductible donation, and all families are encouraged to make this payment to assist the College to develop, and implement its future growth.
6. After school clubs will be charged separately, and individually based on actual cost of provision. These are not included in this schedule.
7. Payment of Levies and tuition fees includes all books, excursions/incursions and consumables. No extra payments are required, except for after-school clubs and private music tuition (including instruments), which are voluntary and charged individually.
8. Refunds for levies are made on a pro-rata basis, with the exception of those good/services, which have already been consumed (e.g. swimming, booklist, ICT resources, student insurance).



### 1:1 DEVICE HIRE – YEARS 4-6

- Students entering Years 4-6 in 2021 will be required to hire a College iPad at \$300 per year. This cost is included in Levies.
- Please refer to the specific information pack related to this initiative.

### SYDNEY/ CANBERRA TRIP

Parents of students in Year 6 and 7 in 2021 (2020 Year 5 and 6 students) attending the Sydney/Canberra Trip in 2021 follow a payment schedule for camp fees. This is additional to Levies. Approximate camp cost is \$2,000.

## » SECONDARY FEES AND LEVIES NOTES (Years 7 – 12)

Secondary Levies include Device Hire, general amenities, resources, ICT levy, compulsory camps, core subject text books/e-books and other consumable items.

1. All fees and levies are compulsory.
2. Years 7-10 have core subject text and e-books included in their Levies. See booklist notes on Page 6.
3. Camps are compulsory as part of the curriculum and will be charged to all students in the course and/or year level. This does not include the Year 6 and 7 Sydney/Canberra Trip (see note below).
4. Year 7 students will have a compulsory camp to Ern Halliday Campsite.
5. Year 8 students will have a compulsory Outdoor Education Camp.
6. Year 9 students will have a compulsory camp to Narrogin/Bluff Knoll.
7. Years 9-12 students enrolled in Outdoor Education will have additional camp/s. The cost of the camp/s is included in the subject charge, as itemised on the Booklist, and will be charged directly to school fees when a child is enrolled in this course.
8. Years 7-12 students will purchase their own textbooks and accessories, which are itemised on the year level Booklist. See special note for Year 7-10 core textbooks and e-books in levies table.
9. **General Amenities** fee includes charges for copying, student insurance, bus use, Year Book, Christian Living programme, and other consumable items.
10. The **Resources** fee allows teachers to conduct some specific excursions/ incursions, or specific classroom activities without costing parents any extra. This includes: sport, whole school initiatives, and rewards.
11. The **Building Fund** is a voluntary tax deductible donation, and all families are encouraged to make this payment to assist the College to develop and implement its future growth.
12. After school clubs will be charged separately and individually based on actual cost of provision. These are not included in this schedule.
13. Payment of levies and tuition fees includes most excursions/ incursions and consumables. However, other extra payments may be required, including: after-school clubs, private music tuition (including instruments), and some specific costed excursions, which are charged separately.
14. Year 12 Formal (Ball) and Leaver's Jacket will be charged separately.
15. Refunds for Levies are made on a pro-rata basis, with the exception of those services, which have already been consumed (e.g. student insurance, ICT, etc.). Any refund will be calculated by the Business Manager.

### SYDNEY/ CANBERRA TRIP

Parents of students in Year 6 and 7 in 2021 (2020 Year 5 and 6 students) attending the Sydney/Canberra Trip in 2021 follow a payment schedule for camp fees. This is additional to Levies. Approximate camp cost is \$2,000.



### 1:1 DEVICE HIRE – HIGH SCHOOL

- The hire charges for Year 7 -12 are included in the Part B Levies.
- All students Years 7-9 need a College approved iPad.
- Students entering Year 7 in 2021 will be required to hire the College iPad for \$300 per year.
- New students to HillSide in 2021 in Years 8 and 9 will be required to hire the College iPad for \$300 per year. Existing students retain their current device.
- Students entering Years 10 in 2021 will be required to hire a MAC laptop at \$600 per year.
- New students to HillSide in 2021 in Years 11 and 12 will be required to hire the College MAC laptop for \$600 per year. Existing students retain their current device.
- Please refer to the specific information pack related to this Device Hire initiative.

### YEAR 7-10 BOOKLIST

In 2021 a fee has been added to include the text requirements for all core subjects – English, Mathematics, Science and HASS. This means that:

- All students (Years 7-10) will receive the digital copy (e-book) of the required textbook for use on their College iPad/MAC laptop.
- The textbook (printed version) will be made available for use in the classroom only.
- Novels for English will be borrowed and returned from the College library. If a novel is **not** returned when required, an account will be sent to the parents for the cost of the novel.
- Parents will need to buy other Booklist items that are non-core subjects.
- Any subject charges for non-core subjects in Years 7-10 are listed on the booklist.

### YEAR 11-12 BOOKLIST

Year 11-12 students have additional subject charges and items which are outlined in the student Booklist.





### FEES AND CHARGES PAYMENTS

There are three options for paying College fees and charges in 2021:

#### 1. Full Year's Payment:

Payment for the full year's Tuition Fees and Levies (total) for Years Pre-Primary to Year 12 incurs a discount of 5% on the Tuition Fees (not applicable to any Levies, or Kindergarten Tuition Fees or Levies). This payment must be made before 28th February, 2021.

#### 2. Term Payments:

Payable in four instalments as per dates below:

Payment 1: Due by 28th February, 2021

Payment 2: Due by 22nd May, 2021

Payment 3: Due by 14th August, 2021

Payment 4: Due by 6th November, 2021

It is important that parents who wish to pay term-by-term, meet payment timelines listed above. Parents who are unable to meet the timeline, may be required to transfer to Direct Debit arrangements.

#### 3. Direct Debit Payment:

(weekly/fortnightly/monthly):

Direct Debit payments including using B-Pay and PayWay. Direct Debit payments must, in total, be sufficient to clear total annual fees by 6th November, 2021. The Direct Debit payment needs to be calculated as the total 2021 fees/charges divided by the payment option increments selected. Three payment scenarios are:

**Option 1:** Weekly – 40 Payments (with first payment due by 7th February, 2021)

**Option 2:** Fortnightly – 20 payments (with first payment due by 7th February, 2021)

**Option 3:** Monthly – 10 payments (February to November)

### ADDITIONAL FEES AND CHARGES INFORMATION

Please note: 2021 tuition fees and levies will be invoiced at the beginning of the school year. The invoice will show the full year's amount.

1. Students who enrol mid-year will usually pay pro-rata levies. Some Levies cannot be calculated using pro-rata e.g. insurances, swimming, etc.
2. Mid-term enrolments will pay the full term's tuition fee and Levies for that term.
3. Parents who have decided to send their child to school less than full time will be required to pay full fees because a part-time enrolment still takes a place that could be offered to a full-time student.
4. Secondary students (Year 7-12) must purchase their own books according to a Booklist that is issued during Term Four of the previous year.
5. The calculation of fees, when a family has both secondary and primary students, is discounted from the highest fee paying student to the lowest. Discounts for families with multiple children do not apply to Kindergarten (non-compulsory) year groups.
6. Families with four or more children between the school years Pre-Primary to Year 12, will only pay Tuition Fees for a maximum of three children who are enrolled concurrently. Levies are still applicable to all children enrolled. Kindergarten is not discounted in any respect.
7. Families with outstanding fees beyond the payment date will have their circumstance reviewed by the College. In cases where the outstanding account is not being addressed effectively, as judged by the Principal, the enrolment may be terminated. Without payment, the matter will usually be referred to the College's debt collection agency. Associated additional charges may be payable by the family, including six percent interest on the outstanding debt and possible debt management fees.



8. Families eligible for Secondary Assistance through the Commonwealth Government Scheme are encouraged to make this payment available to the College. Those with an eligible concession card might be able to access these payments. Application forms are available from

the College office. The due date for applications is Thursday 1st April 2021.

9. Out of School Hours Care (OSHC) is charged separately from school fees.

## NOTICE OF WITHDRAWAL

*A full term's notice, in writing, to the Principal, must be made before exiting the school, or an additional term's tuition fees will be charged (see schedule below). For example, if a child is not returning for Term 4, then the last day of Term 2 (of the same school year), would be the final date for notice to be made in writing to the Principal. Mid-term notice, which is received after the cut-off date, or notice received in the school term preceding exit, will attract full fees/charges for the subsequent school term.*

For parents' convenience:

- A *Notice of Withdrawal Form* is available in hard copy from the College office, or, alternatively;
- An email may be sent to the Principal: [admin@hillside.wa.edu.au](mailto:admin@hillside.wa.edu.au), stating the date, student/s name/s, and intention to exit.

## EXIT NOTICES

Cut off dates for notice of exit for the 2021 school year are:

### Student Exit Date:

### Final Notice Date:

Not entering Term 1, 2021	25/9/2020	(Last Day Term 3, 2020)
Not entering Term 2, 2021	9/12/2020	(Last Day Term 4, 2020)
Not entering Term 3, 2021	1/4/2021	(Last Day Term 1, 2021)
Not entering Term 4, 2021	25/6/2021	(Last Day Term 2, 2021)
Not entering Term 1, 2022	24/9/2021	(Last Day Term 3, 2021)



### HOW TO PAY SCHOOL FEES:

School fees can be paid via three alternate payment methods:

- **Direct Debit** – this is the preferred method of school fee payment. Direct debit forms are available via the College office or email: [schoolfees@hillside.wa.edu.au](mailto:schoolfees@hillside.wa.edu.au);
- **BPAY** – direct payments to the College can be made using the BPAY reference number and code found on the family school fee account. If families require BPAY details, or re-issue of fee statements, these may be provided by emailing: [schoolfees@hillside.wa.edu.au](mailto:schoolfees@hillside.wa.edu.au);
- **In person** at the College office - cash, EFTPOS or Credit Card. The office is able to receive payments over the phone.

### VOLUNTARY DONATIONS:

Bank details for the College Building Fund and the College Scholarship Fund are shown below:

#### COLLEGE BUILDING FUND (TAX DEDUCTIBLE - VOLUNTARY):

Bank: Westpac  
Acc Name: HillSide Christian College  
BSB: 036-065  
Bank Account: 389-488

#### COLLEGE SCHOLARSHIP FUND (TAX DEDUCTIBLE - VOLUNTARY):

Bank: Westpac  
Acc Name: HillSide Christian College  
BSB: 036-065  
Bank Account: 405-337

#### SCHOOL DATES 2021

Term 1 starts Monday 1<sup>st</sup> February

Term 1 finishes Thursday 1<sup>st</sup> April

Term 2 starts Tuesday 20<sup>th</sup> April

Term 2 finishes Friday 25<sup>th</sup> June

Term 3 starts Tuesday 20<sup>th</sup> July

Term 3 finishes Friday 24<sup>th</sup> September

Term 4 starts Tuesday 12<sup>th</sup> October

Term 4 finishes Friday 10<sup>th</sup> December  
(for high school students 7-10)

Term 4 finishes Wednesday 15<sup>th</sup> December  
(for primary students K-6)

Office closes Wednesday 22<sup>nd</sup> December

*He has shown you, O man, what is good. What does the LORD  
require of you, but to act justly, to love mercy,  
and to walk humbly with your God?*

Micah 6:8



HILLSIDE  
CHRISTIAN COLLEGE

336 Hawtin Road Forrestfield

[www.hillside.wa.edu.au](http://www.hillside.wa.edu.au)

9453 2644

[admin@hillside.wa.edu.au](mailto:admin@hillside.wa.edu.au)