



HILLSIDE  
CHRISTIAN COLLEGE

# Fees & Charges 2022

To knowledge, add wisdom





## TABLE OF CONTENTS

FEES AND CHARGES SCHEDULE .....	2
ENROLMENT APPLICATION FEE: \$100.00 .....	2
FAMILY EDUCATION BOND: \$500.00 .....	2
PART A - TUITION FEES 2022 .....	3
KINDERGARTEN TO YEAR 12 ANNUAL TUITION FEES PER CHILD .....	3
PART B - LEVIES 2022 .....	3
EARLY LEARNING & PRIMARY LEVIES Per Child - Kindergarten to Year 6 .....	3
SECONDARY SCHOOL LEVIES Per Child - Years 7-12 .....	3
SECONDARY SCHOOL LEVIES Additional - Years 7-12 .....	3
PRIMARY FEES AND LEVIES NOTES (KINDERGARTEN – YEAR 6) .....	4
1:1 DEVICE HIRE – YEARS 4-6 .....	4
SYDNEY/ CANBERRA TRIP .....	4
SECONDARY FEES AND LEVIES NOTES (YEARS 7 – 12) .....	5
SYDNEY/ CANBERRA TRIP .....	5
1:1 DEVICE HIRE – HIGH SCHOOL .....	6
YEAR 7-10 BOOKLIST .....	6
YEAR 11-12 BOOKLIST .....	6
PART C – PAYMENT SCHEDULE 2022 .....	7
FEES AND CHARGES PAYMENTS .....	7
ADDITIONAL FEES AND CHARGES INFORMATION .....	7
OUTSTANDING FEES .....	8
SECONDARY ASSISTANCE SCHEME .....	8
OUT OF SCHOOL HOURS CARE .....	8
NOTICE OF WITHDRAWAL .....	8
HOW TO PAY SCHOOL FEES .....	9
VOLUNTARY DONATIONS .....	9
COLLEGE BUILDING FUND (Tax Deductible - voluntary) .....	9



## FEES & CHARGES SCHEDULE

HillSide Christian College is a private school. The information in this schedule should be used by parents/carers to calculate total fees and charges for 2022.

The total fees and charges consist of adding Tuition Fees (Part A) and Levies (Part B). The Payment Schedule is outlined in Part C. Please be aware of the exit notice requirements and additional booklist for High School students.

The main components in relation to fees and charges are listed below:

- Enrolment Application Fee
- Education Bond
- Part A - Tuition Fees
- Part B - Levies (please use applicable Primary and/or Secondary table)
- Part C - Payment Schedule 2022
- High School students have a Booklist which is an additional cost. Primary School students do not have a Booklist as it is included in Levies
- Exit Notices - Cut-off dates 2022

### ENROLMENT APPLICATION FEE: \$100.00

Parents seeking to enrol their child/ren at HillSide Christian College need to make an application, and attend an interview as part of the enrolment process. A non-refundable enrolment application fee of \$100 per family is payable when enrolment application forms are submitted.

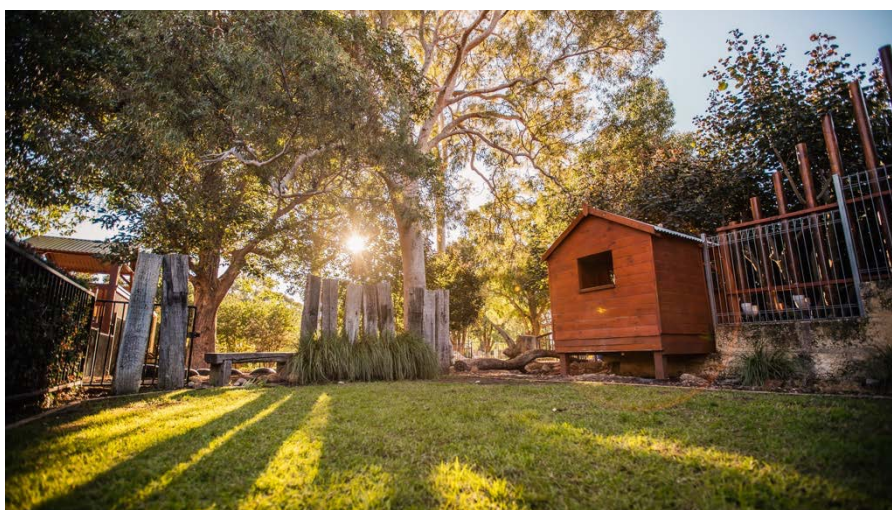


### FAMILY EDUCATION BOND: \$500.00

A Family Education Bond is charged for entry into any year level of the College by new families. It is refundable when the last student in a family leaves the College if there are no outstanding fees. Please note: a student entering Kindergarten or Pre-Primary must transition into the primary section (Year 1) to be eligible for the refund of the Bond.

In summary, the Bond is **not refundable** if:

- Any student who leaves the College before starting Year One (having entered in Kindergarten or Pre-Primary years);
- A family (student/s), pre-accepted for entry to the College, declines the position, and does not fill the enrolment;
- A family leaves the College with outstanding fees. The bond will be refunded once the account has been cleared.



## PART A - TUITION FEES 2022

### KINDERGARTEN TO YEAR 12 ANNUAL TUITION FEES PER CHILD

Year Level	First Child	Second Child	Third Child	Fourth Child +
Kindergarten	2,575	No discount applies		
Pre-Primary-Year 6 (Primary)	3,600	2,900	2,200	Levies only
Years 7 - 12 (Secondary)	4,300	3,500	2,600	Levies only

Please note: Families with four or more children from Pre-Primary to Year 12 do not pay tuition fees for the fourth and subsequent children. However, Kindergarten children do not attract any discount. Levies are applied to all students in all years at the College, and there is no discount for levies.

## PART B - LEVIES 2022

Annual Levies are charged per student, and need to be added to Tuition Fees (PART A)

### EARLY LEARNING & PRIMARY LEVIES

#### Per Child - Kindergarten to Year 6

Year	Levies	Device Hire	Levy Total
4K	720		720
PP	820		820
1	820		820
2	820		820
3	820		820
4	820	300	1120
5	820	300	1120
6	920	300	1220

The Booklist is included in Primary School Levies.

### SECONDARY SCHOOL ELECTIVE SUBJECT LEVIES

#### Additional - Years 9-10

Alternate Energies	150
Ceramics	170
Design & Technology Metal	200
Design & Technology Small Engines	100
Design & Technology Wood	200
Digital Photography	60
Drama	120
Food Technology	200
Media	60
Outdoor Education (including camps)	250
Robotics	100
Textiles	130
Visual Art	100

### SECONDARY SCHOOL LEVIES

#### Per Child - Year 7-12

Year	Levies	Text/e-books core subjects	Device Hire	Levy Total
7	1350	250	300	1900
8	1350	250	300	1900
9	1050	250	*	1300
10	850	250	600	1700
11	850	See booklist	600	1450
12	850	See booklist	*	850

\*New students to the College will have device hire added: \$300 for Year 9, 2022: \$600 for Year 12, 2022.

Current students see ICT Notes.

Years 7-12 have a general Booklist.

### SENIOR SECONDARY LEVIES

#### Additional - Years 11-12

VET charge - Business	200
VET charge - Hospitality	300
WACE charge - Outdoor Education	300
WACE charge - Material, Design & Technology	200
WACE charge - Visual Art	200
WACE charge - Human Biology (Year 12)	50

**Please note:** All high school Tuition Fees, Levies and subject charges are shown on this page. Secondary students need to add Booklist items only.

## PRIMARY FEES & LEVIES NOTES (Kindergarten – Year 6)

Early Learning and Primary Levies include general amenities, resources, compulsory swimming lessons, ICT levy, Device Hire (Year 4-6), booklist and other consumable items.

All tuition fees and levies are compulsory. Levies include:

1. **General Amenities** fees include charges for copying, student insurance, bus use, Year Book, Christian Living programme, and other consumable items.
2. **Resources** items allows teachers to conduct excursions/incursions, specific classroom activities and school projects without costing parents any extra.
3. Year 6 **Levies** includes graduation dinner, leavers' shirt, and associated excursion.
4. The **Building Fund** is a voluntary tax-deductible donation, and all families are encouraged to make this donation to assist the College to develop, and implement its future growth.
5. **After school clubs** will be charged separately, and individually based on actual cost of provision. These are not included in this schedule.
6. **Payment of Levies and tuition fees** includes all books, excursions/incursions and consumables. No extra payments are required, except for after-school clubs and private music tuition (including instruments), which are voluntary and charged individually.
7. **Refunds for levies** are made on a pro-rata basis as approved by the Principal.



### 1:1 DEVICE HIRE – YEARS 4-6

- Students enrolled in Years 4-6 in 2022 will be required to hire a College iPad at \$300 per year. This cost is included in Levies.
- Please refer to the specific information pack related to this initiative.

### SYDNEY/ CANBERRA TRIP

Parents of students in Year 6 and 7 in 2023 attending the Sydney/Canberra Trip in 2023 follow a payment schedule for camp fees. This is additional to Levies. Approximate camp cost is \$2,000.



## SECONDARY FEES & LEVIES NOTES (Years 7 – 12)

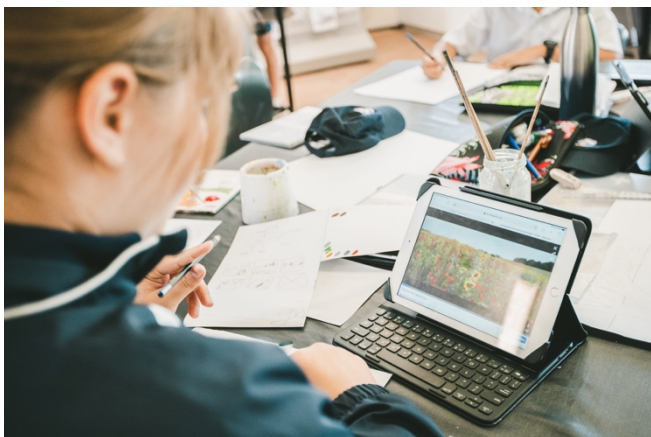
Secondary Levies include Device Hire, general amenities, resources, ICT levy, compulsory camps, some subject text books/e-books and other consumable items. Please note:

1. All fees and levies are compulsory.
2. Years 7-10 have some subject text and e-books included in their Levies. See Booklist notes on Page 6.
3. Camps are compulsory as part of the curriculum and will be charged to all students in the course and/or year level. This does not include the Year 6 and 7 Sydney/Canberra Trip (see note below).
4. Year 7 students will have a compulsory Orientation Camp.
5. Year 9 students will have a compulsory camp to Narrogin/Bluff Knoll.
6. Years 9-12 students enrolled in Outdoor Education will have additional camp/s. The cost of the camp/s is included in the subject charge, as itemised on the Booklist, and will be charged directly to school fees when a child is enrolled in this course.
7. Years 11-12 students will purchase their own textbooks and accessories, which are itemised on the year level Booklist.
8. Years 7-10 purchase Booklist items, which includes stationery, materials and some subjects textbooks. See special notes for Years 7-10 textbooks and e-books (p.6)
9. Levies include excursions/ incursions, and specific classroom activities without costing parents any extra. This includes: sport, whole school initiatives, and Reward Days.
10. The Building Fund is a voluntary tax deductible donation, and all families are encouraged to make this donation to assist the College to develop and implement its future growth.
11. After school clubs and private music tuition will be charged separately and individually based on actual cost of provision. These are not included in this schedule.
12. Year 12 Formal (Ball) and Leaver's Jacket will be charged separately.
13. Refunds for Levies are made on a pro-rata basis as approved by the Principal.

### SYDNEY/ CANBERRA TRIP

Parents of students in Year 6 and 7 in 2023 attending the Sydney/Canberra Trip in 2023 follow a payment schedule for camp fees. This is additional to Levies. Approximate camp cost is \$2,000





## 1:1 DEVICE HIRE – HIGH SCHOOL

- The hire charges for Year 7 -12 are included in the Part B Levies.
- All students Year 7-9 will be required to hire the College iPad for \$300 per year. This is included in school Levies.
- All students Year 10-12 will be required to hire a College MAC laptop for \$600 per year. This is included in school Levies.
- Year 9 and Year 12 students who purchased the College approved device on the previous ICT agreement are to retain their current device. They will not be charged the device hire in their school fees for 2022.
- All newly enrolled Year 9 and 12 students in 2022 will hire a school device.
- Please refer to the specific information pack related to this Device Hire initiative.

## YEAR 7-10 BOOKLIST

In 2022, a fee has been added to Levies to include the text requirements for all core subjects – English, Mathematics, Science and HASS. This means that:

- All students (Years 7-10) will receive the digital copy (e-book) of the required textbook for use on their College iPad/MAC laptop.
- The textbook (printed version) will be made available for use in the classroom only.
- Novels for English will be borrowed and returned from the College library. If a novel is **not** returned when required, an account will be sent to the parents for the cost of the novel.
- Parents will need to buy other Booklist items for other subjects.
- Any subject charges for Years 7-10 are listed on Levy schedule.

## YEAR 11-12 BOOKLIST

Additional subject charges are itemised on Levy schedule. However, there is also student Booklist for Year 11 and 12 students for books and stationery.





## PART C – PAYMENT SCHEDULE 2022

### FEES AND CHARGES PAYMENTS

There are three options for paying College fees and charges in 2022:

#### Full Year's Payment

Payment for the full year's Tuition Fees and Levies (total) for Years Pre-Primary to Year 12 incurs a discount of 5% on the Tuition Fees (not applicable to any Levies, or Kindergarten Tuition Fees or Levies). This payment must be made before 25th February, 2022.

#### Term Payment Full

Payable in four instalments as per dates below:

Payment 1: Due by 25th February, 2022

Payment 2: Due by 20th May, 2022

Payment 3: Due by 12th August, 2022

Payment 4: Due by 4th November, 2022

It is important that parents who wish to pay term-by-term, meet payment timelines listed above. Parents who are unable to meet the timeline, may be required to transfer to Direct Debit arrangements.

#### Direct Debit/ BPAY Payments

(weekly/fortnightly/monthly)

Direct Debit payments include using B-Pay. Direct Debit payments must, in total, be sufficient to clear total annual fees by 4th November, 2022. The Direct Debit payment needs to be calculated as the total 2022 fees/charges divided by the payment option increments selected. Three payment scenarios are:

##### Option 1: Weekly – 40 Payments

(with first payment due by 4th February, 2022)

##### Option 2: Fortnightly – 20 payments

(with first payment due by 4th February, 2022)

##### Option 3: Monthly – 10 payments

(February to November)



### ADDITIONAL FEES AND CHARGES INFORMATION

Please note: 2022 tuition fees and levies will be invoiced at the beginning of the school year. The invoice will show the full year's amount.

1. Mid-term enrolments will pay the full term's Tuition fee and Levies for that term.
2. Parents who have decided to send their child to school less than full time will be required to pay full fees because a part-time enrolment still takes a place that could be offered to a full-time student.
3. Secondary students (Year 7-12) must purchase their own books according to a Booklist that is issued during Term Four of the previous year.
4. The calculation of fees (when a family has both secondary and primary students), is discounted from the highest fee paying student to the lowest. Discounts for families with multiple children do not apply to Kindergarten (non-compulsory).
5. Families with four or more children between the school years Pre-Primary to Year 12, will only pay Tuition Fees for a maximum of three children who are enrolled concurrently. Levies are still applicable to all children enrolled. Kindergarten is not discounted in any respect.

## OUTSTANDING FEES

Families with outstanding fees beyond the payment date will have their circumstance reviewed by the College. In cases where the outstanding account is not being addressed effectively, as judged by the Principal, the enrolment may be terminated. Without payment, the matter will usually be referred to the College's debt collection agency. Associated additional charges may be payable by the family, including six percent interest on the outstanding debt and possible debt management fees.

## SECONDARY ASSISTANCE SCHEME

Families eligible for Secondary Assistance through the Commonwealth Government Scheme are encouraged to make this payment available to the College. Those with an eligible concession card might be able to access these payments. Application forms are available from the College office. The due date for applications is Friday 8th April 2022.

## OUT OF SCHOOL HOURS CARE

Out of School Hours Care (OSHC) is charged separately from school fees.



## NOTICE OF WITHDRAWAL

A full term's notice, in writing, to the Principal, must be made before exiting the school, or an additional term's tuition fees will be charged (see schedule below). For example, if a child is not returning for Term 4, then the last day of Term 2 (of the same school year), would be the final date for notice to be made in writing to the Principal. Mid-term notice, which is received after the cut-off date, or notice received in the school term preceding exit, will attract full fees/charges for the subsequent school term.

For parents' convenience:

- A *Notice of Withdrawal Form* is available in hard copy from the College office, or, alternatively;
- An email may be sent to the Principal: [admin@hillside.wa.edu.au](mailto:admin@hillside.wa.edu.au), stating the date, student/s name/s, and intention to exit.

### EXIT NOTICES

Cut off dates for notice of exit for the 2022 school year are:

Student Exit Date:	Final Notice Date:	
Not entering Term 1, 2022	24/9/2021	(Last Day Term 3, 2021)
Not entering Term 2, 2022	14/12/2021	(Last Day Term 4, 2021)
Not entering Term 3, 2022	8/4/2022	(Last Day Term 1, 2022)
Not entering Term 4, 2022	24/6/2022	(Last Day Term 2, 2022)
Not entering Term 1, 2023	23/9/2022	(Last Day Term 3, 2022)

## HOW TO PAY SCHOOL FEES:

---

School fees can be paid via three alternate payment methods:

- **Direct Debit** – this is the preferred method of school fee payment. Direct debit forms are available via the College office or email: [schoolfees@hillside.wa.edu.au](mailto:schoolfees@hillside.wa.edu.au);
- **BPAY** – direct payments to the College can be made using the BPAY reference number and code found on the family school fee account. If families require BPAY details, or re-issue of fee statements, these may be provided by emailing: [schoolfees@hillside.wa.edu.au](mailto:schoolfees@hillside.wa.edu.au);
- **In Person** at the College office - cash, EFTPOS or Credit Card. The office is able to receive payments over the phone using credit card.

## VOLUNTARY DONATIONS:

---

Bank details for the College Building Fund and the College Scholarship Fund are shown below:



### COLLEGE BUILDING FUND

(TAX DEDUCTIBLE - VOLUNTARY):

---

Bank:	Westpac
Acc Name:	HillSide Christian College
BSB:	036-065
Bank Account:	389-488

He has shown you, O man, what is good. What does the  
LORD require of you, but to act justly, to love mercy,  
and to walk humbly with your God?

Micah 6:8





HILLSIDE  
CHRISTIAN COLLEGE

336 Hawtin Road Forrestfield

[www.hillside.wa.edu.au](http://www.hillside.wa.edu.au)

9453 2644

[admin@hillside.wa.edu.au](mailto:admin@hillside.wa.edu.au)